



NOVETI



Content

LED HIGH BAY



APPLICATION

Industrial

Warehouses
Production halls
Food industry
Parking areas
Farms
Refrigeration rooms

Shop & Retail

Shopping mall
Supermarkets
Retail stores
Food

Architectural

Exhibition center
Library
Art Museum
Concert hall
Museum

LED UFO HIGH BAY



APPLICATION

Industrial

Warehouses
Production halls
Food industry
Parking areas
Farms
Refrigeration rooms



Shop & Retail

Shopping mall
Supermarkets
Retail stores
Food



Architectural

Exhibition center
Library
Art Museum
Concert hall
Museum

LED FLOODLIGHT LED STADIUM LIGHT



APPLICATION

Industrial

Warehouses
Production halls
Food industry
Parking areas
Farms
Refrigeration rooms



Outdoor

Car parks
Pools
Harbor
Port wharf
Gas stations
Bus stations



Stadium

Stadium
Football Stadium

LED TRI-PROOF LIGHT



APPLICATION

Industrial

Warehouses
Production halls
Food industry
Parking areas
Farms
Refrigeration rooms

Education

Classrooms
Cafeterias
Auditorium
Sports halls
Chemical Lab
Pools

Outdoor

Car parks
Pools
Airports
Train stations
Gas stations
Bus stations

Shop & Retail

Shopping mall
Supermarkets
Retail stores
Food

LED PANEL LIGHT



APPLICATION

Education

Classrooms
Cafeterias
Auditorium
Sports halls
Chemical Lab
Pools

Shop & Retail

Shopping mall
Supermarkets
Retail stores
Food

LED EXPLOSION PROOF



APPLICATION

Industrial

Warehouses
Medicine plant
Food industry
Painting store

Outdoor

Petrol station
Gas station

Redefine Anti-Glaring

UGR <21

Anti-glaring light is required more and more for applications where people doesn't feel comfortable with the glaring light, especially when the light were not very high. MILD BEAM is the ideal solution for visual protection. This increases the performance of staff and the quality of their work.

66

The right lighting in the right place is a crucial factor in industry for greater productivity and employee motivation. The effortless managing of visual tasks affects employee performance, the quality of work as well as occupational safety. The spectrum of these requirements is so diverse that generally applicable lighting and only a single correct lighting for workplaces is not possible. All our lightings are therefore developed on the basis of specific characteristics and requirements depending on the respective needs.



Europe Patent

160LM/W



UGR <21



IK 10



Project: Indoor Basketball Gym
Location: Italy
Light used: 35pcs Mildbeam 200W

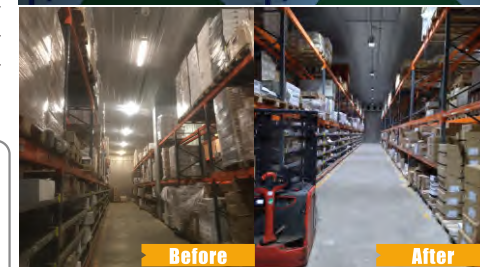
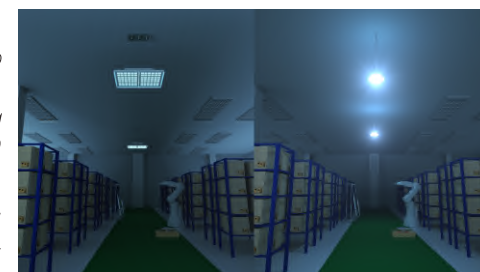


- Advanced UGR technology

The Optics was specially developed to minimize glare and maximize homogeneity. With an anti-glaring film on the lens and a shield in front, we managed to achieve UGR<19

- Simple installation

With ceiling installation accessory equipped with mains lead, the two suspension points at the ceiling could be combined to One-Point installation. This saves time and cost for installation. And even vibrations and air movements are no longer able to twist it.

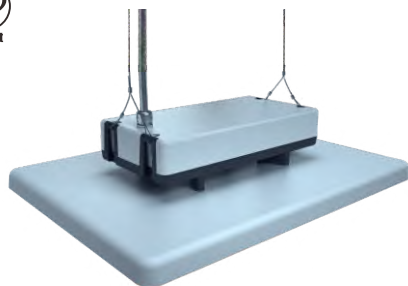


Before

After

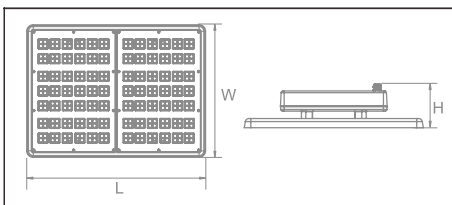


Project: Wall's Warehouse
Location: France
Light used: 89pcs Mildbeam


160LM/W

Features

Housing: Pure Aluminum
 Thermal Conductivity: 226 W/m·K
 Led: CREE JK 3030
 CRI: Ra>70 (80/90 for option)
 SDCM: <6
 Power Factor: >0.95
 THD: <15
 Driver: Osram
 Driver Efficiency: >93%
 Protection: OTP, OCP, OVP, SCP
 Surge Protection: 10KV
 Waterproof: IP65
 Impact Test: IK10
 Electrical: 220-240V, 50/60Hz
 Operating Temperature: -40~50°C
 Tm21: L90B10>50,000H
 Lifetime: 50,000H



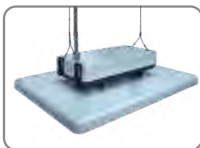
Functions

0/1~10V Dimmable

Optical options:



Model	Watt	Voltage	Lumen	CRI	CCT	Dimension
HB120ME2I-CO	120W	220~240V	19200LM	>80	4000K	L415*W310*H120MM
HB200ME4I-CO	200W	220~240V	32000LM	>80	4000K	L487*W362*H120MM



With Plug-in Sensor

With plug in sensor and different function options such as PIR sensor, micro-wave sensor, Zigbee+sensor, etc, our Crossover series UFO is the ideal solution to lower inventory, faster stock turnover, cost saver, and more options for end user. It not only lowers the purchasing cost, but also increases customers' competitive advantage.

Sensor Options

		Micro-wave & Daylight	PIR & Daylight	Daylight Sensor
Zigbee Micro-wave Sensor	Zigbee PIR Sensor	Zigbee Daylight Sensor	Zigbee Micro-wave + Daylight	Zigbee PIR + Daylight



Easy = Money saving

To compare with the sensor highbay and Zigbee control in the market, our light is more easy to use, more flexible, and easy installation. This not only lowers the label cost, but also makes marketing more easier and provides more options for end users.



Project: HEINEKEN
Location: Ireland
Light used: 220pcs 150w



Coverage

“**Demonstration:**

Target-time: 10min
Setpoint on:50lux
Setpoint off:300lux
Waiting Level:50%
Waiting Time: 30mins
Background Level: 10%
Background Time: +∞

Target time

Refers to the time period the lamp remains at 100% illumination after no motion detected.

Waiting Time

Refers to the time period the lamp remains at a low light level before it completely switches off in the long absence of people.

Waiting Level

The low light level you would like to have after the hold time in the long absence of people

1

21:00

2

21:10

3

21:40

1-2-3 goes in cycle at night ...

100% on when movement detected, and dims to 10% in long absence.

4

08:10

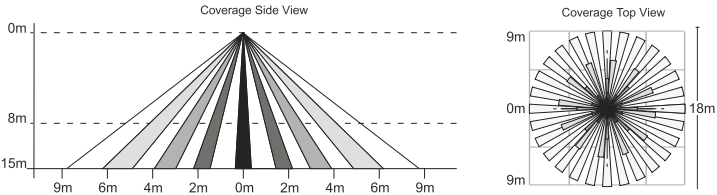
The light switches on at 100% when there is movement detected.

The light dims to 50% waiting level after the hold-time.

The light remains in 10% low dimming level at night.

When the natural light level exceeds setpoint off to light, the light will turn off even if when the space is occupied.

NOTE: Factory Default Setting:
Detection range: 100%
Target Level time: 10mins
Daylight sensor: off
Waiting level: 50%
Waiting level time : 30mins
Background level: 0%



More Energy Saving

More energy saving lighting products are strongly required day by day. Customers pay more attention to the cost saving in the long term run. Not only higher brightness is a key, but also smart control will save more energy automatically. Our Plug-in sensor UFO is the ideal solution to meet customers' need. 200lm/w brightness will save half energy than other competitors, and also the plug-in sensor option will save 40%-60% energy.

Comparison	Ours	Others
Power	150w	200w
Brightness	22500lm	24000lm
Consumption per month (6H/D, 20D/M)	18.0 kwh	24 kwh
Constant illuminance saving (day light and micro-wave sensor)	40%-60%	non
Electric charge	0.305\$/kwh	0.305\$/kwh
Device used	100pcs	100pcs
Electric charge per month	\$329.40	\$732.00
Electric charge in 5 years	\$19,764.00	\$43,920.00



Crossover series VS OTHERS



- Features
- Housing: Die-cast

Thermal Conductivity: 96 W/m·K

Led: Philips

CRI: Ra>80 (90 for option)

SDCM: <6

Power Factor: >0.95

THD: <15

Driver: Sosen

Driver Efficiency: >93%

Protection: OTP, OCP, OVP, SCP

Surge Protection: 4KV

Waterproof: IP65

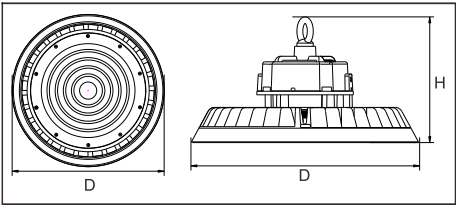
Impact Test: IK08

Electrical: 100-277V, 50/60Hz

Operating Temperature: -40~60°C

TM21: L80B10>50,000H

Lifetime: 50,000H



Functions

0/1~10V Dimmable

Optical options:

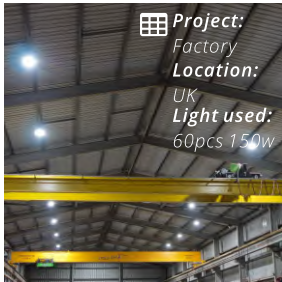


Model	Watt	Voltage	Lumen	CRI	CCT	Dimension
ETI-HBC100-XX	100W	100~277V	15000LM	>80	4000K	φ258*139mm
ETI-HBC150-XX	150W	100~277V	22500LM	>80	4000K	φ299*139mm
ETI-HBC200-XX	200W	100~277V	30000LM	>80	4000K	φ347*142mm





Terminator series high bay LED provides operators with a powerful energy efficient LED alternative to traditional high maintenance fixtures. It allows the fixture to provide a brilliant 150lm/w high quality light. The advanced LED technology allows this unit to boast an excellent 50,000+ hour rated lifespan with a CRI of 80. Thanks to the cold-forging technique, which offers the best heat dissipation that helps to enhance the lamp's thermal resistance.

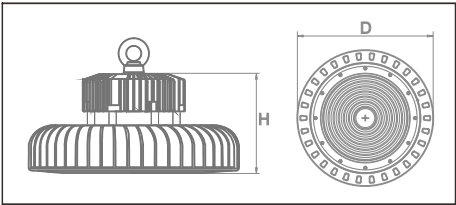


CE RoHS compliant LM79 LM80 TM21



Features

Housing: Cold Forging A1070
Thermal Conductivity: 226 W/m·K
Led: Philips
CRI: Ra>80
SDCM: <6
Power Factor: >0.95
THD: <15
Driver: Meanwell
Driver Efficiency: >93%
Protection: OTP, OCP, OVP, SCP
Surge Protection: 6KV
Waterproof: IP65
Impact Test: IK08
Electrical: 100-277V, 50/60Hz
Operating Temperature: -40~60°C
Tm21: L80B10>50,000H
Lifetime: 50,000H



Functions

0/1~10V Dimmable

Optical options:

150lm/w 5 YEARS WARRANTY Meanwell Driver Philips LED

Model	Watt	Voltage	Lumen	CRI	CCT	Dimension
ETI-HBT100-XX	100W	100~277	15000LM	>80	5000K	D200*H210MM
ETI-HBT150-XX	150W	100~277	22500LM	>80	5000K	D260*H206MM
ETI-HBT200-XX	200W	100~277	30000LM	>80	5000K	D320*H206MM





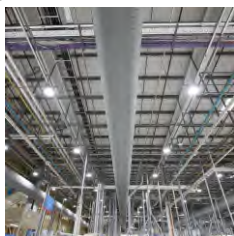
To buy a good quality but low price high bay light, our crossover is the best option. Sosen driver and Philips led are used to guarantee high quality and 5 years warranty. Die-cast housing and perfect design enhance user experience. Not only 5 years warranty is offered, but also lumen maintenance after 50,000hours is up to 80%. It is always a good value for money.



Philips LED



Sosen Driver

Cold Forging
heatsink

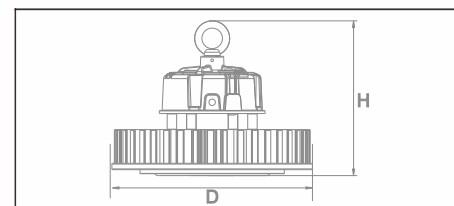
Project: Factory
Location: Ireland
Light used: 430pcs 200w

CE RoHS compliant LM79 LM80 TM21



Features

Housing: Cold Forging A1070
Thermal Conductivity: 226 W/m·K
Led: Philips
CRI: Ra>70 (80/90 for option)
SDCM: <6
Power Factor: >0.95
THD: <15
Driver: Sosen
Driver Efficiency: >93%
Protection: OTP, OCP, OVP, SCP
Surge Protection: 4KV
Waterproof: IP65
Impact Test: IK08
Electrical: 100-277V, 50/60Hz
Operating Temperature: -40~60°C
Tm21: L80B10>50,000H
Lifetime: 50,000H



Functions

0/1~10V Dimmable

Optical options:



130lm/w

5 YEARS WARRANTY

Sosen Driver

Philips LED

Model	Watt	Voltage	Lumen	CRI	CCT	Dimension
ETI-HBP100-XX	100W	100~277V	13000LM	>80	5000K	D250*H172MM
ETI-HBP150-XX	150W	100~277V	19500LM	>80	5000K	D250*H191MM
ETI-HBP200-XX	200W	100~277V	26000LM	>80	5000K	D280*H200MM



Redefine
Anti-glaring

UGR
<21

Anti-glaring light is required more and more for applications where people don't feel comfortable with the glaring light, especially in stadium. Navigator series floodlight is the ideal solution for visual protection.



Wire Through

With buckle design, the fixture can be opened very easily to rewire inside by terminal. This will make installation much easier and cost saved.



Tempered Glass

With IK08 protected tempered glass, our flood light has better performance for outdoor usage.



IK 10

Stainless steel mesh protection is used to reach more than IK10 against ball hit. It is necessary for application of low height mask.



PMMA Lens

PMMA offers resistance to UV and visible radiations. In comparison with PC lens, PMMA lens can be used outdoor directly to sunshine, and will not turn yellow even after 5 years.



Solution for small stadium

Project: Tennis Court
Location: China
Light used: 48pcs 300w

“

To ensure that every match and show can be performed smoothly, and to assist operatives to remain live broadcast, the right lighting solution is indispensable. For appropriate lighting intensities with wide-area, homogeneous illumination, optimum colour rendering and dimmability in every situation and for every activity.

The Optics was specially developed to minimize glare and maximize homogeneity. With an anti-glaring film on the lens and a shield in front, we managed to achieve UGR<21



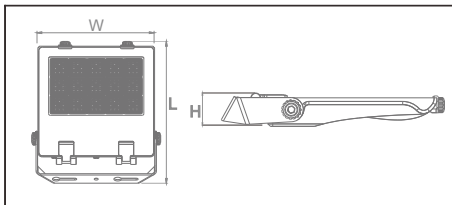
Project: Indoor stadium
Location: Italy
Light used: 24pcs



UGR<21

Features

Housing: Die-cast Aluminum ADC12
Thermal Conductivity: 96 W/m·K
Led: CREE JK3030
CRI: Ra>70
SDCM: <6
Power Factor: >0.95
THD: <15
Driver: Sosen
Driver Efficiency: >90%
Protection: OTP, OCP, OVP, SCP
Surge Protection: 10KV
Waterproof: IP66
Impact Test: IK08 & IK10
Electrical: 100-277V, 50/60Hz
Operating Temperature: -40~50°C
TM21: L90B10>50,000H
Lifetime: 50,000H



Functions

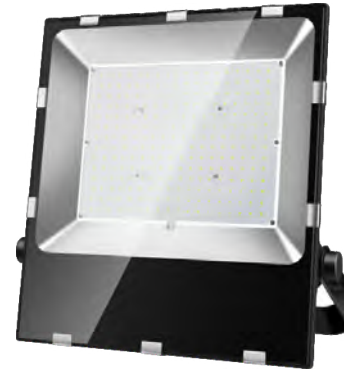
Non-dimmable

Optical options:



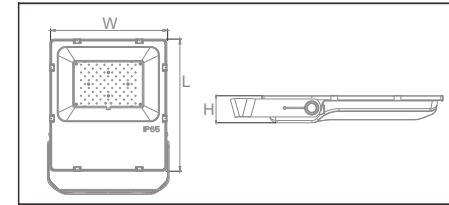
120lm/w **5 YEARS WARRANTY** **Sosen Driver** **CREE LED**

Model	Watt	Voltage	Lumen	CRI	CCT	Dimension
HM240NE1G-CS	240W	100~277V	28800LM	>70	5000K	L461*W380*H69MM



Features

Housing: Die-cast Aluminum ADC12
Thermal Conductivity: 96 W/m·K
Led: Cree
CRI: Ra>70 (80/90 for option)
SDCM: <6
Power Factor: >0.95
THD: <15
Driver: Osram
Driver Efficiency: >90%
Protection: OTP, OCP, OVP, SCP
Surge Protection: 6KV
Waterproof: IP65
Impact Test: IK08
Electrical: 220-240V, 50/60Hz
Operating Temperature: -40~50°C
Tm21: L80B10>50,000H
Lifetime: 50,000H



Functions

Non-dimmable

Optical options:



150lm/w **5 YEARS WARRANTY** **Osram Driver** **Cree LED**

Model	Watt	Voltage	Lumen	CRI	CCT	Dimension
FL100SEGH-CO	100W	220~240V	15000LM	>70	5000K	L402.5*W295*H60MM
FL150SEGH-CO	150W	220~240V	22500LM	>70	5000K	L430.5*W330*H60MM
FL200SEGH-CO	200W	220~240V	30000LM	>70	5000K	L470.5*W360*H60MM



RECON Series

Available in various power fitted with efficient LEDs from international brand Philips and powered by Sosen driver, our Recon series LED Flood Lights offer the users not only superior quality of lighting exteriors, but also a supreme reliability. With the optical lens and uniform photometric distribution, this LED lighting series achieves high optical efficiency. Thanks to a robust aluminium housing with safety glass cover, the floodlights are ideal for outdoor flood lighting applications, such as wall mounted around building facades, buildings as well as lighting gardens, paths near to buildings, garages, and entrance ways.



Plug-In
Sensor



**Standard
Flood light**



10 secs



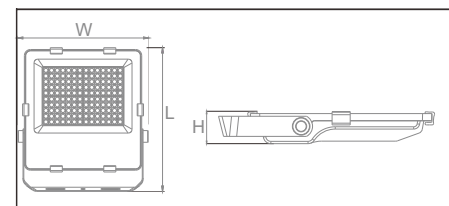
**Sensor
Flood Light**

CE RoHS compliant LM79 LM80 TM21

Recon
LED Flood Light Series

Features

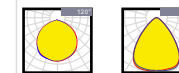
Housing: Die-cast Aluminum ADC12
Thermal Conductivity: 96 W/m·K
Led: Philips
CRI: Ra>70 (80/90 for option)
SDCM: <6
Power Factor: >0.95
THD: <15
Driver: Sosen
Driver Efficiency: >90%
Protection: OTP, OCP, OVP, SCP
Surge Protection: 4KV
Waterproof: IP66
Impact Test: IK08
Electrical: 100-277V, 50/60Hz
Operating Temperature: -40~50°C
TM21: L80B10>50,000H
Lifetime: 50,000H



Functions

Non-dimmable

Optical options:



150lm/w 3 YEARS WARRANTY Tureful Driver Philips LED

Model	Watt	Voltage	Lumen	CRI	CCT	Dimension
FL030RECH-PT	30W	100~277V	4500LM	>70	5000K	L232*W204*H53MM
FL050RECH-PT	50W	100~277V	7500LM	>70	5000K	L280*W245*H53MM

150lm/w 5 YEARS WARRANTY Sosen Driver Philips LED

Model	Watt	Voltage	Lumen	CRI	CCT	Dimension
FL100RECH-PS	100W	100~277V	15000LM	>70	5000K	L354*W319*H53MM
FL150RECH-PS	150W	100~277V	22500LM	>70	5000K	L400*W359*H63MM
FL200RECH-PS	200W	100~277V	30000LM	>70	5000K	L430*W389*H63MM



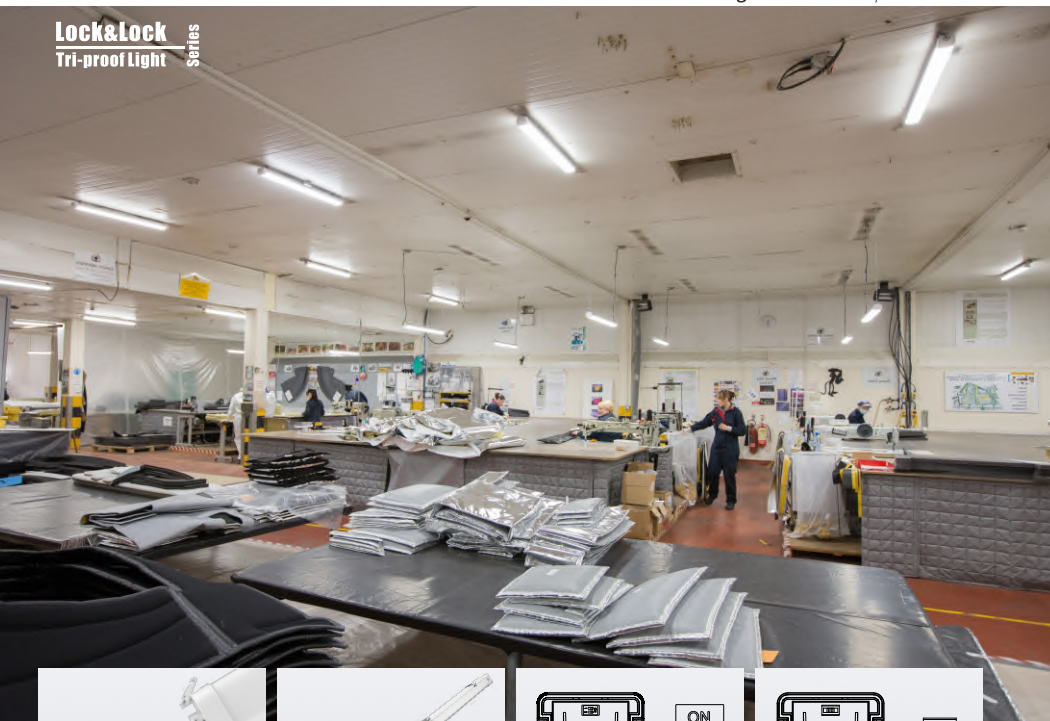
“

In order to help our customer to lower labor cost during installation, our Lock&Lock series tri-proof light's end-cap is designed specially. With buckles on each end, it can be open very easily so that customers can rewire inside the housing. And 3XL, 3x1.5mm², 3x2.5mm², 5x1.5mm² and 5x2.5mm² wire through are all for option to be linkable in series.



Project: Workshop
Location: Ireland
Light used: 1240pcs Fixtures

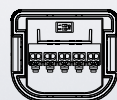
Lock&Lock
 Tri-proof Light Series



Easy Open&rewire

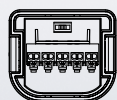


Wire Through



Power Adjustable
 20W 40W 50W 60W

Power Adjustable

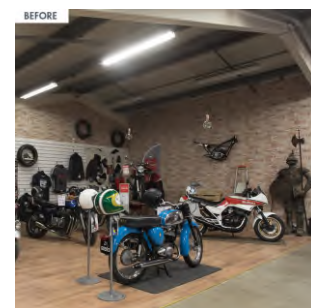
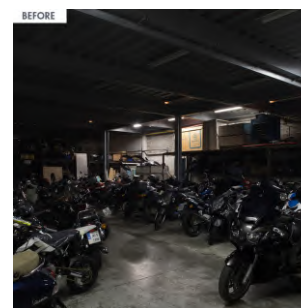


CCT Adjustable
 3000K 4500K 6000K

CCT Adjustable

130LM/W

Bridgelux led and Osram driver are used for Lock&Lock series Tri-proof light. With low current circuit design, the temperature will be 5% lower, and efficiency 7% higher. It can get 130lm/w



Project:

Bikeworld

Location:

Ireland

Light used:

400pcs fixtures

Bikeworld is a leading supplier of Kawasaki motorbikes. They also offer a wide range of biking apparel and accessories in their retail spaces.

Some areas of the showrooms were dark and the lights were failing. It was also costing the company a considerable sum to run the old high-wattage fluorescents. The window lights in particular were proving a high draw on electricity as they were lit at night in order to showcase the bikes.

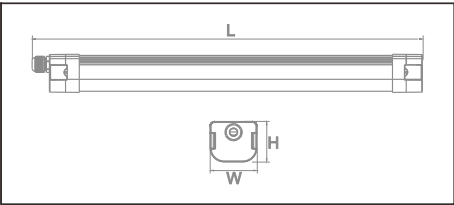
Using our Light as a Service, Bikeworld was retrofitted with almost 400 fixtures including the public showroom, storage areas, back of house and the offices.

Light quality has been drastically improved and energy consumption has plummeted. The bikes and gear are now under lighting which highlights their quality and Bikeworld reduced the lighting bill without making any capital expenditure.



Features

Housing: Plastic With Aluminum Inside
Thermal Conductivity: 226 W/m·K
Led: Sanan
CRI: Ra>80
SDCM: <6
Power Factor: >0.95
THD: <15
Driver: CE
Driver Efficiency: >90%
Protection: OTP, OCP, OVP, SCP
Surge Protection: 2KV
Waterproof: IP65
Impact Test: IK08
Electrical: 220-240V, 50/60Hz
Operating Temperature: -20~40°C
TM21: L80B10>50,000H
Lifetime: 50,000H



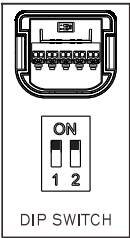
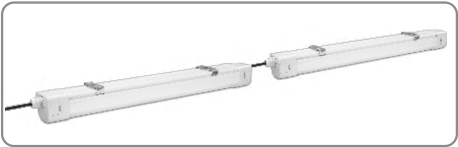
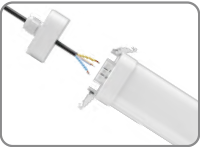
Functions

Non-dimmable

Optical options:

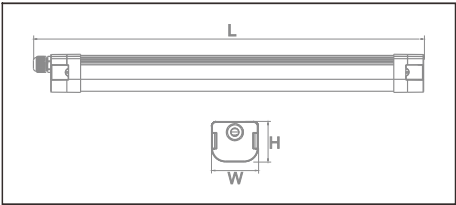


Model	Watt	Voltage	Lumen	CRI	IP	Dimension
ETI-TP020LE2C-20	20W	220~240V	2000LM	>80	IP65	L659*W74*H64MM
ETI-TP040LE4C-40	40W	220~240V	4000LM	>80	IP65	L1221*W74*H64MM
ETI-TP060LE5C-60	60W	220~240V	6000LM	>80	IP65	L1502*W74*H64MM



Features

Housing: Plastic With Aluminum Inside
Thermal Conductivity: 226 W/m·K
Led: Bridgelux
CRI: Ra>80
SDCM: <6
Power Factor: >0.95
THD: <15
Driver: Osram
Driver Efficiency: >90%
Protection: OTP, OCP, OVP, SCP
Surge Protection: 2KV
Waterproof: IP65
Impact Test: IK08
Electrical: 220-240V, 50/60Hz
Operating Temperature: -20~40°C
TM21: L80B10>50,000H
Lifetime: 50,000H



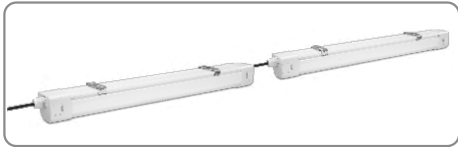
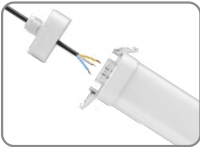
Functions

Non-dimmable · Power Adjustable

Optical options:



Model	Watt	Voltage	Lumen	CRI	IP	Dimension
ETI-TP020LE2F-26	20W	220~240V	2600LM	>80	IP65	L659*W74*H64MM
ETI-TP040LE4F-52	40W	220~240V	5200LM	>80	IP65	L1221*W74*H64MM
ETI-TP060LE5F-78	60W	220~240V	7800LM	>80	IP65	L1502*W74*H64MM



Backlit

The Thor series Backlit panel is a commercial luminaire utilising a LED optical system to achieve superior performance, high uniformity, excellent efficiency and reduced glare. Since it doesn't have LGP inside, no yellowish problem will occur after years working.

Better Life time

To compare with edgelit panel, our Thor series Backlit panel has big advantages. Since it is direct light emitting, it doesn't have shadows on the edges of the panel. Since it doesn't need LGP inside, no yellowish problem will occur after years working. And the LED has much bigger heat dissipation surface, the lumen maintenance and life time are much better.



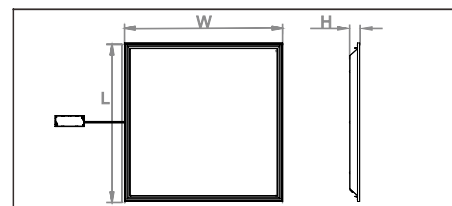
UGR<19

A special Kerafym diffuser plate is used on the surface to lower the UGR to less than 19. Not only the ugr is perfect for office, showroom, etc, but also the light uniformity is improved.



Features

Housing: Aluminum & Iron
Thermal Conductivity: 226 W/m·K
Led: Sanan
CRI: Ra>80
SDCM: <6
Power Factor: >0.95
THD: <15
Driver: Philips
Driver Efficiency: >90%
Protection: OTP, OCP, OVP, SCP
Surge Protection: 2KV
Waterproof: IP44
Impact Test: IK08
Electrical: 220-240V, 50/60Hz
Operating Temperature: -20~40°C
TM21: L80B10>50,000H
Lifetime: 50,000H



Functions

Non-dimmable

Optical options:



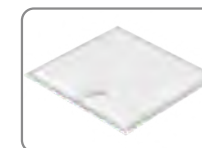
120lm/w

3 YEARS WARRANTY

Philips Driver

Sanan LED

Model	Watt	Voltage	Lumen	CRI	IP	Dimension
PH036T22E-SP	36W	220~240V	4320LM	>80	IP44	L595*W595*H30MM
PH036T14E-SP	36W	220~240V	4320LM	>80	IP44	L1195*W295*H30MM
PH036T62E-SP	36W	220~240V	4320LM	>80	IP44	L620*W620*H30MM



ATEX certified

Ex II 2G Ex eb mb IIC T4 Gb
II 2D Ex tb IIC T(95°C) Db



Application

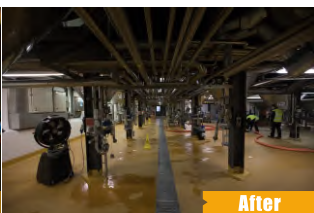
“Applied to oil fields, oil refineries, offshore oil platform, power plants, gas stations, oil tanks, wharf, tunnel, pumping station, substation, the military base, etc. Zone I and Zone II Hazardous Locations, Zone 21, Zone 22 and IIA, IIB, IIC explosive gas atmosphere.

Zone 1 Zone 2
Zone 21 Zone 22

Project: Factory
Location: Ireland
Light used: 220pcs 150w



Before



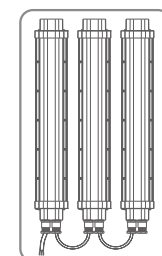
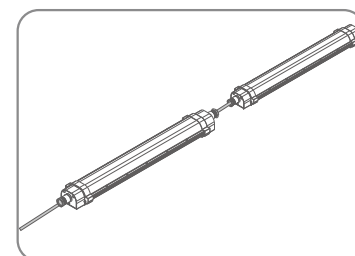
After



“Unlike the glass tube design of traditional fluorescent lamps, our lamps have no filaments or fragile housings to break during operation. Instead of using a combination of gases to produce light, light emitting diodes (LEDs) use semi-conductive materials that illuminate when electric current applied and emitting light. With LED lights, there is no warm up time or cool down time before re-striking and provide instant illumination when powered on, adding to the reliability of LED technology. By nature, LED light sources run significantly cooler than fluorescent lamps, reducing the chance of accidental burns and increased temperatures due to heat emissions. It provides a more reliable, stable, durable, and energy efficient light source over traditional fluorescent lighting.



Wago
connectors
Easy Rewiring
Cost Saving

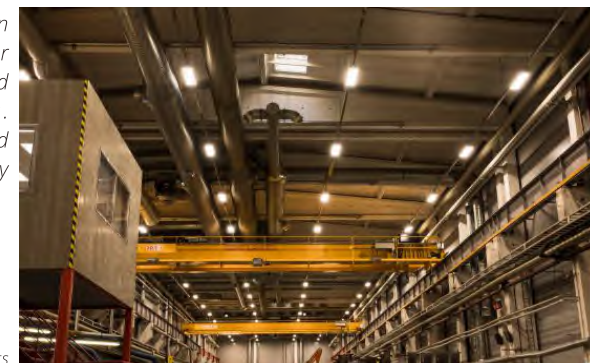


Linkable in Series

The end cap on each side of the fixture can be opened very easily to rewire inside. With one gland and two glands for options. and 3x2.5mm² or 5X1.5mm² wire through, it can be linkable in series to save installation cost.

With ATEX certified, our explosion proof light can be widely used for applications of flammable and explosive chemical materials. Bridgelux led and specially designed driver are used to guarantee safety and long lifetime.

Project: Industrial workshop
Location: Germany
Light used: 184pcs ATEX Lights

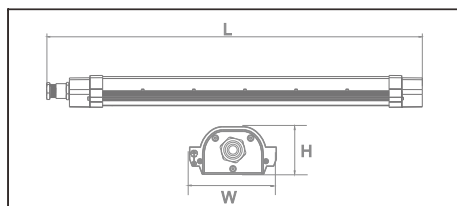




II 2G Ex eb mb IIC T4 Gb
 II 2D Ex th IIC T(95°C) Db

Features

Housing: Pure Aluminum A6063
 Thermal Conductivity: 226 W/m·K
 Led: Bridgelux
 CRI: Ra>80
 SDCM: <6
 Power Factor: >0.95
 THD: <15
 Driver: Lifud
 Driver Efficiency: >92%
 Protection: OTP, OCP, OVP, SCP
 Surge Protection: 4KV
 Waterproof: IP65
 Impact Test: IK10
 Corrosion Proof: WF2
 Electrical: 100-277V, 50/60Hz
 Operating Temperature: -25~45°C
 TM21: L90B10>50,000H
 Lifetime: 50,000H



Functions

Non-dimmable

Optical options:



Model	Watt	Voltage	Lumen	CRI	IP	Dimension
TB040SE2E-BG	40W	100~277	4800LM	>80	IP65	L735*W115*H63MM
TB060SE4E-BG	60W	100~277	7200LM	>80	IP65	L1335*W115*H63MM



Contact France

Une question ?
 Un conseil technique ?
 Une offre tarifaire ?

+33 (0)4 30 96 65 01

contact@noveti.fr



www.noveti.fr

S.A.S NOVETI
 RCS MONTPELLIER 844844001
 TVA FR03844844001
 NAF 4669A

service.technique@noveti.net
 comptabilite@noveti.net